



PINNER PARK INFANT AND NURSERY SCHOOL

GOVERNING BODY NEWSLETTER - NOVEMBER 2015

Dear Parents and Carers

A year has passed since I wrote my first newsletter as newly elected Chair of Governors for Pinner Park Infant and Nursery School. To say that the time has gone quickly would be somewhat of an understatement as the last school year has passed in a bit of a blur but it has been both a challenging and very rewarding time for me. During this time we have witnessed the completion of the extensive school expansion scheme, the election of two new Parent Governors, further consolidation of our free school meals scheme and external moderation of our pupils' work to name but a few and I am sure that this year will be equally as interesting and diverse in terms of the challenges ahead.

A few words on the role of the Governing Body

The PPINS Governing Body consists of school staff, parents, co-opted members and Local Authority Governors. Our role as a 'critical friend' means that we have a responsibility to the pupils, parents, Local Authority and the School to help set strategic direction and ensure accountability.

We are a diverse group with a wide range of skills and experience which we volunteer to support the school. Fundamentally we are held together by a passion to ensure PPINS is an outstanding school, delivering high quality teaching and learning and enabling the children to develop and grow in a safe and warm environment.

The Governing Body meets formally every half term to review the School's Development Plan, progress and financial health. Each Governor is also a member of one of the sub-committees (e.g. Resources or Planning & Curriculum) which also meet at least termly to examine the school's performance and resourcing in more detail.

A new school year usually brings changes to a Governing Body, and this year is no exception with some of our members coming to the end of their term of service. In particular we bid a sad farewell to

Graham White, who is stepping down from the Governing Body after over 20 years of outstanding service which has taken in the roles of Parent Governor, Chair of the Governing Board and his most recent role as Chair of the Resources Committee. His final report from the Resources Committee is below and we all wish him well in his 'retirement'. I, for one, am very conscious of the amount of experience and knowledge he brought to our group and the void we will need to fill now that he has gone.

This in turn provides us with the opportunity to recruit new skills and experience to the board. We are currently in the process of casting the net externally to seek out Co-opted Governors who can provide the right skills and knowledge base to strengthen our talented team. As a result of this we have been able to appoint a new Co-opted Governor, Lawrence DeSouza, who I am certain will be a great asset to the Governing Body. Welcome Lawrence!

Finally, I would like to offer my heartfelt thanks to all our staff at PPINS. Their hard work dedication is a credit to the school and their profession and I wish you and our pupils all the best over the coming school year.

Ian Elmer, Chair of Governors

Views from members of the Governing Body

I was elected as one of the two new parent governors in November 2014. Since joining the board, it has been a stimulating albeit busy time attending training courses on the role of a governor, various meetings such as full Governing Body meetings, and both sub-committee meetings (Resources and Planning & Curriculum), to gain a full understanding of the breadth of the role. I joined the Planning & Curriculum committee in the summer term as I am passionate about this area. Later this year I am hoping to play a more detailed role by being a governor with a special interest in Key Stage 1.

Reflecting on being a parent governor for almost one year, it has been insightful, interesting, educational, time demanding, but most of all, rewarding to be part of a team that is taking an outstanding school through a period of great change, with building works and the introduction of a new curriculum, with the minimal amount of disruption to our children.

Bhumika Mehta, Parent Governor

Planning and Curriculum Committee

The role of the Planning and Curriculum Committee is to question the school and understand at a deep level what the school does to improve outcomes for all its pupils.

The Committee looks at data and results from the school's observations and assessments, along with the results of standard testing including the year one phonic check, Year two SATS and the Early Years Foundation Stage Profile (EYFSP) at the end of reception. We are also shown evidence of progress for our nursery children. We hear how the school tailors its education to meet individual needs with regard to Special Educational Needs, gifted and talented and for children with English as an additional language. We are made aware of changes that the school implements to adhere with legislation and for the development of the school. The commitment made by all staff to improve outcomes for the children is obvious.

The school expansion has been an incredibly stressful and time consuming event for the school. All staff have continued to ensure that disruption to children has been kept to a minimum. Our Head Teacher, Karen Disspain has fought for the very best outcomes with regards to the expansion and should be commended for the time and effort she has committed to this.

Claire Mogridge, Chair of Planning and Curriculum

Resources Committee

The Resources Committee manages the financial, human and physical assets of the school. This is done as a sub-committee of the Governing Body and recommendations are put forward to them for approval.

Our continued aim is to ensure the school is properly resourced and is getting best value from our assets; this contributes to us being an Outstanding School to be proud of.

The major building works planned for this year is now complete and the extra funding supplied by the school has greatly improved the scope of the building work: to recap :-

- Two new classrooms
- Development of the Studio and Reception Group Room
- Two office areas
- Redeveloped resource, preparation and reprographics area
- Bespoke storage for curriculum, topic and art resources
- Teacher room for planning, meetings and overflow due to small staff room
- Development of existing two toilets into three separate staff toilets –including one disabled and one that can be used by the breakfast/after school club

As part of our ongoing maintenance plan, new furniture for Year 2 classes, doors, and computers, have been provided, and the major refurbishment of the nursery has been completed

Our greatest asset, as always, is our staff, which remains stable and committed to the best interests of the children during these changes.

Graham White, Chair of Resources

Financial Summary 2014-15

Income 2014-15

School Budget Rollover 13/14	79,445
Formula Capital c/f 13/14	13,108
Budget Allocation 14/15	1,644,326
SEN High Needs Funding	31,246
Formula Capital 14/15	8,064
Pupil Premium 14/15	31,752
PE Sport Funding	8,892
Universal Infant Free School Meals	76,292
Other Income	5,270
Total	1,898,395

Expenditure 2014-15

Teaching Staff	884,450
Other Staff	547,426
Curriculum	50,260
Premises	65,978
Supplies & Services	136,848
Total	1,684,962

Funds Available for 2015-2016

School Budget Rollover 14/15	197,188
Formula Capital c/f 14/15	16,246
Budget Allocation 15/16	1,611,195
SEN High Needs Funding	40,259
Formula Capital 15/16	8,457
Pupil Premium 15/16	21,700
P.E. Sport Funding	9,208
Universal Infant Free School Meals	151,004
Total	2,055,257

Pupil Premium

The Pupil Premium is a Government initiative that allocates additional funds to schools to support pupils who have been registered for free school meals in the last six years, who are looked after, adopted from care or who are from Forces families.

Pupil Premium funding is one of the ways that we are able to target support and will be allocated following a needs analysis which will identify priority classes, groups or individuals.

In this school, the number of families registered for Free School meals is below average and continuing to fall, reducing the funding we receive. We are aware that some families may be eligible but do not take this up, perhaps because the school did not previously have hot meals and now all meals are free, but by looking at the range of support that can be accessed through this funding will be encouraged to register.

Provision

The range of provision that can be accessed is as follows:

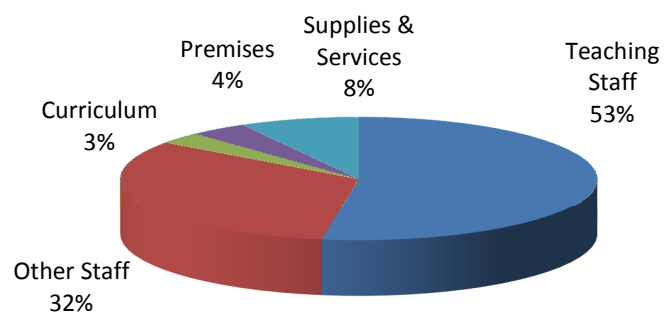
- Speech and Language support
- Early Literacy Intervention in YR and Y1
- 1-1 or small group support in Literacy and Mathematics
- Additional teaching and learning opportunities in small groups within the Classroom
- Access to a Counsellor
- Social skills support

Evaluation

The progress of all children is tracked carefully to

- ensure that any interventions or support that is received is making an impact
- to adjust provision as appropriate
- to ensure that provision is cost effective
- to investigate other ways to provide support

2014-15 Expenditure



Pupil Premium Allocation 2014-15

Speech & Lang TA (Part)	10,232
SEN/EAL Teaching Assistant (Part)	7,909
Counsellor	3,300
Teaching Support - Years 1 & 2	10,311
Total	31,752

GOVERNING BODY – WHO ARE WE?



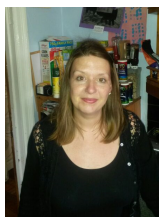
Ameet Jogia – Local Authority Governor



Ian Elmer – Parent Governor and Chair of the Governing Body



Karen James – Co-opted Governor and Vice Chair of Governing Body



Penny Rawlins - Clerk



Bhavin Savla – Parent Governor



Claire Mogridge – Co-opted Governor



Bhumika Mehta – Parent Governor



Mohamed Mishal – Parent Governor



Lawrence DeSouza – Co-opted Governor

School members of the Governing Body - Karen Disspain - Headteacher; Karen Coxon (Assistant Headteacher) – Staff Representative; Bernadette Mills (School Business Manager) – Co-opted Governor

Margaret Tait (Deputy Headteacher) - Observer

If you would like to know more about becoming a Governor, please visit [the School Governor pages](#) on the Harrow council website, or contact the Chair of Governors through the school office.