



# RUISLIP LIDO

8<sup>th</sup> May 2018

Dear 1L & 1SM Parent/Carer,

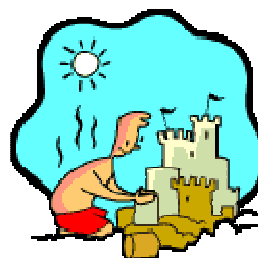
As part of our topic this term, we will be taking Year 1 to Ruislip Lido.

We will be visiting the Lido on Tuesday, 5th June on coaches fitted with safety belts, leaving school at 9:15am and returning to school in time for pick up at 3:20pm. The children will be making sand castles on the beach and generally playing in the sand, using the climbing equipment, having a picnic, a ride on the tourist train and an ice lolly. We will **not** be going near the water. Your child should wear trainers on the day and they should bring a bucket and spade or sand toys (all named please). You will also need to provide a packed lunch for your child.

Ruislip Lido is free entry; however, there will be a charge for the coach, train and an ice lolly. The full cost for each child will be **£9**. Please return the money with the signed slip below in a sealed and labelled envelope no later than Wednesday, 23<sup>rd</sup> May.

Yours sincerely,

Karen Disspain  
**Headteacher**



✂-----

## **1L & 1SM VISIT TO RUISLIP LIDO – Tuesday, 5th June 2018**

Child's Name: ..... Class: .....

I give permission for my child on go on the proposed visit.

I would like to offer to help with the trip.

I enclose a total of **£9** cash / cheque.

Signed.....Name .....

**WE PREFER PAYMENT BY CHEQUE, MADE PAYABLE TO PINNER PARK INFANT SCHOOL PLEASE, WITH YOUR CHILD'S NAME AND CLASS ON THE BACK. THANK YOU.**